

**45 Lacey Road, Edmondson Park, NSW, 2174**



**House For Sale**

Monday, 28 October 2024

45 Lacey Road, Edmondson Park, NSW, 2174

**Bedrooms: 4**

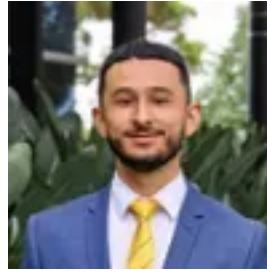
**Bathrooms: 2**

**Parkings: 2**

**Type: House**



Tim Aaron



Alejandro Nagamine

## Perfect Family Home

Discover a haven of comfort and convenience in this Casaview built, beautifully designed, split-level home, perched on an elevated block. With an impressive 15m frontage and a thoughtfully planned, three-step split level layout, this residence offers an expansive, open flow through multiple living areas and sunlit interiors.

Entertain effortlessly with the seamless blend between indoor and outdoor living boasting an undercover patio, which overlooks a low-maintenance, lush grassed backyard-perfect for family gatherings or quiet relaxation.

This is a home where style meets practicality, crafted to enrich your everyday lifestyle. Don't miss the chance to make it yours!

Other features include;

- \* Four good sized bedrooms with built in wardrobes
- \* Walk in wardrobe and ensuite with separate toilet to master bedroom
- \* Open plan kitchen, family and dining room
- \* Modern kitchen with gas cooking, stainless steel appliances, island bench and walk in pantry
- \* Formal lounge room
- \* Neat and tidy main bathroom with bathtub and his and hers vanities
- \* Internal laundry
- \* Ducted air conditioning and downlights throughout
- \* High ceiling with 4.4m pitched roof
- \* Split level design
- \* Undercover entertaining area with downlights
- \* Low maintenance grassed backyard
- \* Manicured gardens
- \* Garden shed
- \* Double lock up garage with internal access
- \* High side of the street
- \* Built by Casaview
- \* Sitting on a 450m<sup>2</sup> block of land

Location;

- \* 300m to St Francis Catholic College
- \* 850m to Edmondson Park Public School
- \* 950m to McDonald's Edmondson Park
- \* 1.5km to Edmondson Park Station
- \* 1.8km to Ed. Square Shopping Centre

Call today to arrange your inspection!