

5A Coralie Street, Plympton, SA, 5038

**NOAKES
NICKOLAS**

House For Sale

Sunday, 3 November 2024

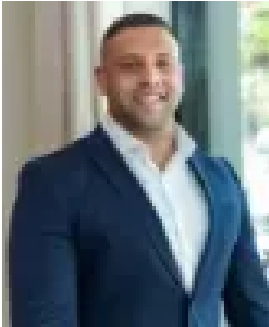
5A Coralie Street, Plympton, SA, 5038

Bedrooms: 3

Bathrooms: 2

Parkings: 2

Type: House



Jorden Tresidder
0881663989

An on-trend city to coast Townhouse.

Best Offers By 18/11 at 1pm - Unless Sold Prior.

Set to enjoy the shopping, café culture and tramline perks of its prized city to coast pocket, this on-trend townhouse combines the best of both worlds to create a chic address that will never go out of style.

The multi-faceted, panelled façade imparts a street presence to catch the eye, only hinting at the contemporary design that's layered throughout the flexible, three-bedroom footprint.

Filled with light, monochromatic tones and Smeg stainless-steel appliances, the kitchen acts as a central hub to open plan lower living teaming up with an undercover courtyard to offer an ambient atmosphere for both entertaining and unwinding.

A good night's rest is saved for a second level that beams with comfort upon plush carpets, where a spacious master is joined by a couple's ensuite, and both additional bedrooms have a second living zone and main bathroom at close reach.

Just a short stride from multiple modes of public transport, upstanding schooling and shopping conveniences - this ideal home base has found its lifestyle match.

Features

- Secure double garage with rear access
- Dual living zones, balcony to upstairs
- Built-in robes to each bedroom
- Stone-topped kitchen & bathrooms
- Downstairs laundry & powder room
- Ducted R/C air conditioning
- 6.6kW solar system
- NESS security alarm & Crimsafe hinged front door
- 2.7m ceilings
- Understairs storage
- Irrigated front gardens

Lifestyle

- 400m from Beckman Street Deli, bus & tram stops
- Zoned for Plympton International College, proximity to Plympton Primary, Immanuel College, St. John the Baptist, St. Anthony's & Emmaus Christian College
- In the catchment for Glandore Community Kindergarten
- Footsteps from local takeaway, Kurralta Central, Edge Early Learning and Froth & Fodder
- Just 5km from both Glenelg & CBD

Rates

- Council \$1250PA
- SA Water \$328PQ
- ES Levy \$141PA
- Community \$1360PA
- Community Title
- City of Marion

Disclaimer at noakesnickolas.com.au | RLA 315571