

6 Argyle Court, Annandale, QLD, 4814

House For Sale

Saturday, 11 January 2025



6 Argyle Court, Annandale, QLD, 4814

Bedrooms: 4

Bathrooms: 2

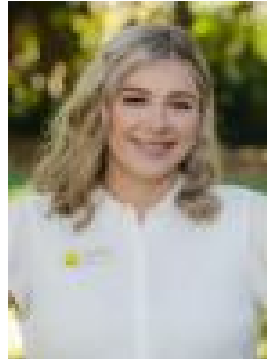
Parkings: 4

Area: 904 m2

Type: House



Giovanni Spinella
0406664191



Lexie Pepyat
0747504021

Room to Grow: Experience Spacious Living

Welcome to your dream home at 6 Argyle Court, an exquisite residence designed for growing families! This spacious 4-bedroom, 2.5-bathroom property features 4 secure garage spaces, providing ample room for all your vehicles.

The home features recent upgrades, including new carpets in the bedrooms and stylish vinyl flooring in the second living area. You'll appreciate the modern electrical improvements, which include new air conditioners, internal and external light fittings, exhaust fans, sockets, light/fan switches and sleek ceiling fans throughout.

As you enter, you'll be greeted by the cathedral ceilings and open-plan main living area that seamlessly integrates the lounge, dining, and kitchen, enhancing the spacious feel of the home. The kitchen is a culinary delight, complete with a servery window and a cozy breakfast bar that opens into the second living area, perfect for entertaining or transforming into your personal oasis. The home also boasts a ducted vacuum system for effortless cleaning throughout.

Unwind in the spacious main bedroom with double door access, featuring a private ensuite and a cleverly designed wardrobe all hidden behind mirror sliding doors. The additional three bedrooms are generously sized, each equipped with built-in wardrobes and air conditioning for year-round comfort.

This home is situated on a generous 904sqm block, providing plenty of outdoor space for family activities and gardening. The expansive yard is perfect for children to play and enjoy outdoor activities. Additionally, there is side access to a substantial shed that includes a concrete mechanic pit, further enhancing the property's functionality and offering versatile storage or workshop options.

Annandale is a vibrant and family-friendly community. The suburb is known for its excellent amenities, including quality schools, parks, and recreational facilities, making it an ideal location for families. Residents have easy access to shopping and dining options. Annandale's beautiful landscapes and welcoming atmosphere provide a perfect backdrop for your new home.

This property is not just a house; it's a lifestyle. Ideally situated in a family-friendly neighbourhood, this home offers everything you need for comfort and convenience.

Don't miss this fantastic opportunity! Contact us today to schedule a viewing and make this beautiful house your new home!

*Property Description/Write-Up is Copyright of Team Giovanni at Ray White Townsville.

Disclaimer: Ray White Townsville has prepared this information using every endeavour to ensure that the information given is true and accurate but accepts no responsibility or liability in respect of any errors, omissions or inaccuracies that may occur. All prospective purchasers should endeavour to make their own enquiries to verify the accuracy of the information provided.