

6 Howqua Way, Taylors Hill, VIC, 3037

House For Sale

Tuesday, 26 November 2024

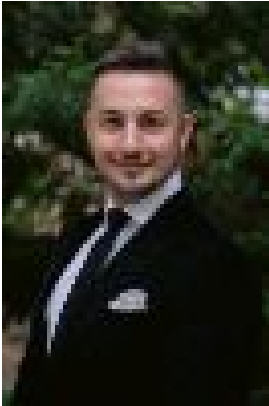
6 Howqua Way, Taylors Hill, VIC, 3037

Bedrooms: 4

Bathrooms: 2

Parkings: 2

Type: House



Reece McKechnie
0487408771

Spacious 4-Bedroom + Study Family Haven in a Tranquil Locale

Situated within the premier Watervale Estate, welcome home to 6 Howqua Way - a cherished 4-bedroom family residence encompassing the very best of Federation revival living, split across two levels and enjoying a beautiful entertaining area, alongside a lifestyle of comfort and convenience.

Heading inside, the home begins with a central hall, effortlessly flowing throughout the home to connect the lower level. With no shortage of living spaces to choose from, including a separate living zone, ideal for elevated everyday living right through to extravagant entertaining, while a combined family and dining room is bathed in natural light and takes a more casual approach. Upstairs, a retreat awaits, ideal as an additional lounge, kids' playroom, or teenagers' hangout zone, ensuring plenty of space for all the family. Enjoy year-round use in the undercover outdoor entertaining area, perfect for alfresco dining, while the manicured rear yard is perfect for kids and pets to run and play.

As the very heart of the home, the G-shaped kitchen showcases quality stainless steel appliances, including 900mm gas cooktop, under-bench oven, and dishwasher, complemented by a deep double sink and an abundance of storage throughout. Completing the picture, the feature breakfast bar creates an informal eating area or a perch to sit and keep the chef company.

Comprising a total of four sleep sanctuaries throughout, each enjoying plush carpet underfoot. Occupying a sought-after ground floor position, the expansive master boasts a walk-in robe and private ensuite with a notable dual vanity, while the three upstairs bedrooms are each fitted with a built-in robe to maximise storage capabilities.

Centrally located, the sparkling family bathroom offers a choice of built-in bathtub, making kids' bathtimes a breeze, or glass corner shower, alongside a vanity with storage, and separate toilet for utmost convenience. Brimming with natural light delivered through the skylight, making it ideal for getting ready for the day, while unwinding at the end of the week is enhanced by a beautiful starry sky at night.

Other features include a double lock-up garage with drive through access to the rear yard, separate storage shed, dedicated study to boost productivity, water tank, and ducted heating paired with evaporative cooling for year-round comfort.

Set in an iconic location that ticks every box, walk to Watervale Boulevard Reserve, leading to Tenterfield Park, Gilson College, Taylors Hill Primary School, Watervale Shopping Centre, and bus route 462. A short drive unlocks further amenity, including CS Square Shopping Centre, Watergardens Shopping Centre & Railway Station, and Keilor Plains Railway Station.