

61 Adeline Crescent, Fletcher, NSW, 2287

House For Sale

Monday, 16 December 2024



61 Adeline Crescent, Fletcher, NSW, 2287

Bedrooms: 4

Bathrooms: 2

Parkings: 2

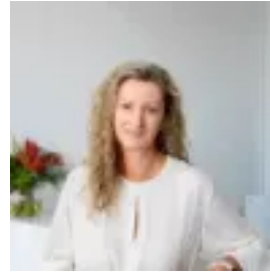
Type: House



Cameron Day
0249416111



Theresa Day
0249416111



Kim Kelly
0249416111

Wonderful Opportunity

Private Inspections By Appointment Available Throughout the Christmas Break

Family Homes in "The Sanctuary" are highly sought and this lovely home will be no exception. Positioned opposite the wetlands and walking track you can easily stroll to Bishop Tyrell with the kids or any of the fabulous parks that this ever popular estate boasts!

Multiple living is essential for busy and hectic families to come together and also find their own space to relax and unwind when needed so you will love the open planned Family & Dining together with the Separate Home Theatre.

The Designer kitchen takes centre stage with elegant Glass Splashback, Extra Large Stone Island Bench, Oversize pantry, Practical Drawer Storage and 900mm Electric Oven with Gas Cooker.

Ideal floor plan allows for a bedroom wing to the rear for the family with the main positioned at the front to capture the Wetland Breeze and views.

Zoned Ducted A/C and Ceiling Fans will keep you fresh throughout the summer and cosy in winter with gas heating bayonet.

Featuring ~ Near New Plush Carpeting ~ Designer Tiled Living ~ Plantation Shutters ~ Large Laundry ~ Double Garaging with Internal Access

Low maintenance lifestyle so you can spend more time doing the things you love!