

62-64 Ooah Circuit, Buccan, Qld 4207



House For Sale

Wednesday, 1 January 2025

62-64 Ooah Circuit, Buccan, Qld 4207

Bedrooms: 5

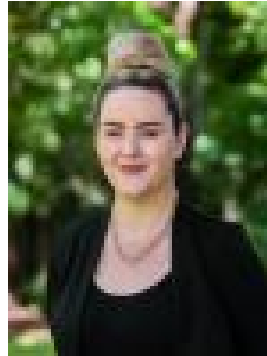
Bathrooms: 2

Parkings: 20

Type: House



Kate Handley
0732003200



Lisa Knowles
0732003200

Offers over 1.45 Million

Experience the pinnacle of luxury and serenity in the highly sought-after "Aspect Estate." This breathtaking 346sqm masterpiece is designed for ultimate family living, showcasing a sprawling single-level layout that effortlessly flows from stunning indoor spaces to exceptional outdoor entertaining. With a perfect fusion of contemporary style and versatile design, this expansive home offers unparalleled comfort and sophistication. Set on one of the estate's largest and most coveted parcels, this expansive 5,114sqm block offers the ultimate in tranquility and privacy. With a showstopping home, an enormous shed and carport for your camper, a resort-style pool perfect for the kids, and a vibrant, welcoming community, this property has everything you need and more. Some features you'll love about the home:

- As you step into the home, the grand Porte Cochere sets an impressive tone, leading you to a foyer adorned with a stunning floor-to-ceiling glass panel. This elegant design offers a captivating preview of the serene and tranquil surroundings that lie beyond.
- Accommodation includes Four (4) spacious bedrooms that are perfectly positioned throughout the home, serviced by the master bathroom
- The exquisite master suite is a true retreat, featuring a generously sized walk-in robe and a lavish ensuite complete with a statement freestanding bath, perfect for indulging in ultimate relaxation.
- A versatile private media room offers endless possibilities-perfectly suited as a fifth bedroom, rumpus or a stylish home office
- Study / Games Room
- The open-plan living area is filled with natural light and seamlessly connects to the outdoor entertainment space. It creates a smooth transition between the lounge and formal dining areas, offering a practical and inviting layout for both everyday living and entertaining
- Gourmet kitchen; showcasing sleek stone benchtops, high-end appliances, soft-close cabinetry and of course butler's pantry-a haven for culinary enthusiasts, offering ample storage and additional workspace to keep the main kitchen pristine.
- Comfort of ducted air conditioning flowing seamlessly throughout the entire home, ensuring year-round climate control

The property features an exceptional outdoor setup, ideal for those needing generous space for vehicles and hobbies. It provides secure accommodation for up to 20 vehicles, including a double garage with internal access. The expansive 9x12m powered shed, complete with a hoist, is complemented by an attached 9x9m carport with a raised roof-perfect for housing caravans, boats, or other large vehicles. This well-designed outdoor area ensures all your storage and recreational needs are met with ease and convenience. The expansive outdoor entertainment area seamlessly extends from the internal living spaces, showcasing breathtaking views of your private rural retreat. With a built-in BBQ for easy entertaining, it leads to a picturesque resort-style inground swimming pool, enhanced by a charming pool house porch. This idyllic setting is perfect for both relaxation and hosting, offering a serene and luxurious atmosphere to unwind or entertain family and friends by the water. Equally impressive as your new home is its unbeatable location within The Aspect, a vibrant estate known for its fantastic community. Surrounded by stunning acreage, the property offers both tranquility and convenience, with Logan Village Shopping Centre, Canterbury and Kings College, and a range of dining and entertainment options just minutes away. Quick access to Loganlea Train Station, Logan Hospital, and the motorway ensures easy travel and commuting. Every inch of this remarkable home has been thoughtfully designed to impress, showcasing a perfect blend of architectural vision and expert craftsmanship. Set in a prime acreage location, this residence offers both luxury and lifestyle in equal measure. Don't miss the chance to make this stunning property your own-your dream home awaits!

Your local hotspots:

- Logan Village Market Place - 4.3km
- Holmview Shopping Centre - 7.0km
- Logan Village State School - 4.1m
- King's Christian College - 5.6km
- Canterbury College - 6.2km
- Holmview Train Station - 9.2km
- Logan Hospital - 13.1km
- M1 Access - 11.1km