

64 Joy Chambers Circuit, Ripley, QLD, 4306



House For Sale

Wednesday, 13 November 2024

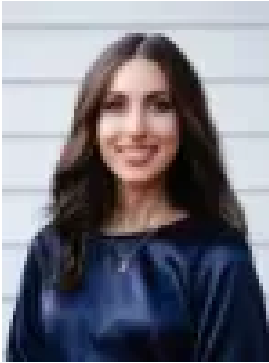
64 Joy Chambers Circuit, Ripley, QLD, 4306

Bedrooms: 3

Bathrooms: 2

Parkings: 1

Type: House



Vanya T

0425440910

Modern Townhouse with NO Body Corporate Fees!

Essential Details at a Glance:

- Freehold townhouse
- No body corporate or strata fees
- 137m² Home on a 225m² Block
- 3 Bed, 2 Bath, 1 Car
- Built in 2019 by Sekisui
- Ecco Ripley Estate
- Currently Owner Occupied
- Council Rates: \$430/quarter
- Rental Appraisal: \$520-\$540/week

This beautiful three bedroom townhouse is situated in the Ecco Ripley Estate, one of South East Queensland's largest growth areas! Forget the hassle of building and enjoy moving into a family home located minutes from parks, Primary and Secondary schools, playgrounds and local cafés.

With 3 bedrooms, a low-maintenance yard and no body corporate fees, this centrally located home is ideal for those looking to enter the Ripley property market, or those looking for a secure investment in a family-friendly community.

Property Features:

- No body corporate or strata. 64 Joy Chambers is a freehold townhouse.
- Corner townhouse with only one neighbour and beautiful views
- Ground floor ceilings upgraded to 2.6m
- Three bedrooms with security screens and wardrobes, master with air-conditioning and remainder with fans
- Master bedroom is generously sized and complete with ensuite and private balcony
- Balcony has beautiful views across the estate - the perfect space for your morning coffee!
- Master ensuite with shower, vanity and toilet
- Main bathroom upstairs with shower and toilet
- Third powder room toilet downstairs
- Air-conditioned and open plan kitchen, living and dining area
- Central kitchen features Caesarstone bench tops, dishwasher, gas cooktop and oven
- European laundry
- Low maintenance yard with storage shed
- Fire pit area with inbuilt seating
- Large raised patio area
- One car lockup carport
- Security screens throughout
- NBN Connection
- Town Gas Connection
- Steel frame construction

Location*:

- Zoned for Ripley Central State School (Primary)
- Zoned for Ripley Valley State Secondary College (Secondary)
- 5 Minutes Walk to Rocket Ship Park (Faye Carr Park)
- 5 Minutes to Schools
- 4 Minutes to Ripley Town Centre Shopping (Coles)

- 16 Minutes to Springfield Train Station
- 18 Minutes to Ipswich CBD
- 45 Minutes to Brisbane CBD
- Flood-Free Area
- Easy access to Cunningham and Centenary Highways

64 Joy Chambers Circuit is best viewed in person - please contact Vanya to arrange a private inspection, or we'll see you at the next open home!

Disclaimer:

Ray White has taken all reasonable steps to ensure that the information in this advertisement is true and correct but accepts no responsibility and disclaims all liability with respect to any errors, omissions, inaccuracies or misstatements contained. Prospective purchasers should make their own enquiries to verify the information contained in this advertisement.

* Times Indicative Only