

# 68 Candlebark Drive, Shepparton North, Vic 3631



## House For Rent

Tuesday, 7 January 2025

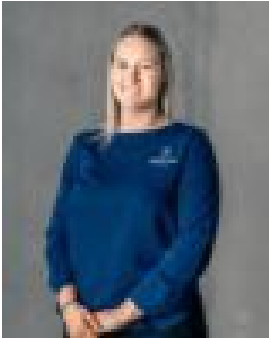
68 Candlebark Drive, Shepparton North, Vic 3631

**Bedrooms: 4**

**Bathrooms: 2**

**Parkings: 2**

**Type: House**



Chloe Earle  
0358311800

**\$780 pw**

Located in the sought after Grammar Park Estate within walking distance to parks, playgrounds & schools in this beautifully Furnished Home! The Master Bedroom with 2x large WIR, ceiling fan & ensuite with double vanity, double shower & separate toilet. Three additional bedrooms all with carpet, double BIR and ceiling fans. The spacious and open plan living, dining and kitchen area with floorboards and direct access to the rear yard. The kitchen includes a 5x gas burner cooktop, oven, double sink, dishwasher & spacious walk in pantry. The main bathroom has a large shower, bath and single vanity, with a separate toilet close by as well as an additional sink and storage space. An additional living area room, carpeted off the main hall wall. The laundry has a single sink, base and overhead cupboards & BIR for ample storage and outdoor access. Outside, a large yard with plenty of grass space, doubled side access to the rear of the property and an undercover and concreted alfresco area for entertaining. Double Garage. Evaporative cooling & Ducted heating throughout for all year round comfort. Shed not included. The property is furnished, ready to move straight in. 12 month lease available. Pets on application. \*\*\*\* Please send through an online enquiry & we will email you an application form or apply online.