

7 Raindrop Circuit, Plumpton, VIC, 3335



House For Sale

Sunday, 3 November 2024

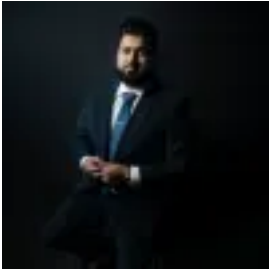
7 Raindrop Circuit, Plumpton, VIC, 3335

Bedrooms: 4

Bathrooms: 3

Parkings: 2

Type: House



Mohit Batra
0391909991

Discover Unparalleled Luxury in Fraser Rise's Finest Neighbourhood

Unique & Co. Real Estate Group proudly presents a luxurious gem at 7 Raindrop Circuit, nestled in the prestigious Fraser Rise community. This eco-conscious, lavish family residence combines sustainable design with modern sophistication, boasting a robust brick exterior and double-glazed windows for exceptional comfort and durability.

Designed for discerning buyers, this home features an expansive entrance, soaring 2,700mm high ceilings, and a beautifully lit interior, creating an inviting ambiance from the moment you walk in. Its spacious layout and contemporary features make it ideal for both first-time buyers and seasoned investors.

This magnificent property includes two lavish master bedrooms, each with its own luxury ensuite and walk-in robe—a rare offering of both space and style. The two additional bedrooms, equipped with built-in robes, share a beautifully appointed central bathroom, ensuring ample privacy and convenience for family members. An extra powder room adds an elegant touch for guests.

At the heart of this home lies a modern kitchen with high-end stone benchtops, a gas cooktop, oven, dishwasher, and a substantial walk-in pantry, providing abundant storage space. Outfitted with sleek 900mm European stainless steel appliances, the kitchen connects seamlessly to an open-plan living and dining area filled with natural light—a perfect setting for family gatherings and entertaining. The property also includes a formal lounge with a beautiful wood log gas fireplace and a spacious double garage with internal access for added convenience.

Fraser Rise is the ultimate family retreat, offering tranquility with easy city access. Located just 30 minutes from Melbourne's CBD, this serene suburb provides families with proximity to nearly ten hectares of beautiful wetlands, retail centers, and top-tier schools, including Springside West Secondary College. Springside Primary School, Deanside Primary School, Watergardens Shopping Centre, and an array of cafes and entertainment options are also moments away, making this home an exceptional blend of luxury and practicality.

Premium Highlights:

#Spacious Formal Lounge - Offers a separate living space for added privacy and relaxation.

#Grand Entrance with Designer Door - Creates a luxurious first impression.

#High-Quality 900mm European Appliances and Dishwasher - Designed for culinary ease and elegance.

#Premium Stone Kitchen Splashback - Adds a lavish touch to the modern kitchen.

#Wood Log Gas Fireplace - Perfect for cozying up in the formal lounge.

#Big Front Door for Lavish Entry - Elevates the grandeur of the home.

#All Bathrooms with LED Touch Screen Mirrors - Adds elegance and convenience.

#Square Set Cornice - Enhances the modern architectural aesthetic throughout.

#Creek-Facing View - Overlooks Taylors Run's picturesque ten hectares of wetlands.

#Low-Maintenance, Fully Landscaped Yard - Complete with a concreted alfresco area, ideal for outdoor entertaining.

#Energy-Efficient Features - Including fully insulated walls, LED downlights, floor-to-ceiling tiling in bathrooms, and hybrid flooring throughout.

#Premium Comfort - With refrigerated cooling, heating, and floorboards across the home.

#Extra Touches - Upgraded tapware, exposed aggregate concrete perimeter, high ceilings (2,700mm), and elevated doors enhance the luxury feel.

#•• Enhanced Security - Equipped with a security alarm system for peace of mind.

And So Much More!

Taylors Run Community: Almost ten hectares of beautiful wetlands, brimming with native birdlife, stretch across Taylors Run. These wetlands are a haven for families—a perfect playground where children can stomp, splash, and explore creeks and pathways, spotting birds, beetles, and butterflies with every step. Designed by GBLA Landscape Architects, this nature-inspired space is home to a barbeque, sheltered picnic area, and a playground with wooden equipment, encouraging play and connection with nature. Taylors Run also offers exercise nodes and a scenic viewing platform over

the wetland pool, where families can wander off the beaten path. For daily conveniences, CS Square is just five minutes away, offering 75 upgraded retailers, and there are 14 schools nearby, with ample sports and leisure facilities to enjoy.

This remarkable residence is a rare find and won't stay available for long. Contact Mohit at 0483 000 009 or Mohinder at 0413 114 454 to arrange a private viewing and secure your chance to make this lavish property your own.

Please see the link below for an up-to-date copy of the Due Diligence Checklist: [Due Diligence Checklist](#)

DISCLAIMER: All stated dimensions are approximate. Information provided is for general purposes and does not constitute any representation on behalf of the vendor or agent. Images for illustrative purposes only.