

**81 Parkmore Rd, Bentleigh East, VIC, 3165**

**buxton**

**Sold House**

Thursday, 5 December 2024

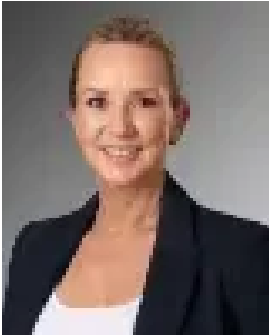
81 Parkmore Rd, Bentleigh East, VIC, 3165

**Bedrooms: 4**

**Bathrooms: 2**

**Parkings: 2**

**Type: House**



Kylie Block



Craig Williamson

## Classic Californian in the Coatesville & McKinnon Zones

Find your future in the College Zone with rare beauty and a coveted Coatesville address. A rare find in this in-demand neighbourhood of mid-century brick veneers and modern-day dual home development, this four bedroom, 2.5 bathroom Californian Bungalow is made even more rare by access to two of Melbourne's most highly-sought state schools.

Respectfully renovated for today's family life with gracious formal lounge-dining plus spectacularly sun-filled north-facing family and alfresco zones, this classic beauty retains rich period detail including sparkling leadlight, lofty decorative ceilings and a decorative fireplace as the backdrop to today's state-of-the-art style. Ready to entertain with a prestige European appliance kitchen fronted by a deep dining-bench, this family-wise home is endlessly practical with designer bathrooms including a genuine double ensuite (with dual-vanity and double shower), and great storage including a double-sided walk-in robe for the vast master suite.

Timeless by design with airy plantation-shutters, slick stone benchtops, rich hardwood floors and sun-catching bi-folds opening wide to the all-season alfresco zone, this centrally-heated and reverse-cycle air-conditioned home is secured by video-intercom and alarm. Set in full-size family grounds with a high-gabled carport adding to street-appeal, there's a skylit garage with mancave potential...even big veggie boxes - each with a grand old lemon tree.

Offering the best of all worlds with zoning for both McKinnon Secondary College and Coatesville Primary School, this sun-bathed Californian has a future-forward location; just 2 blocks to GESAC and Bailey Reserve, 200m to Mackie Rd shopping strip, and a walk to the bus to stations, Monash University and Chadstone.