

83 Lewin Street, Bardon, Qld 4065

CALIBRE
REAL ESTATE

House For Sale

Saturday, 4 January 2025

83 Lewin Street, Bardon, Qld 4065

Bedrooms: 4

Bathrooms: 2

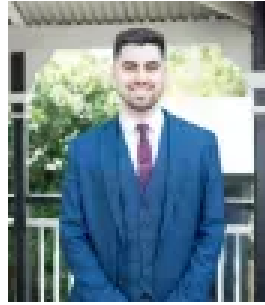
Parkings: 1

Area: 465 m2

Type: House



Justin Hagen
0733673411



Keaton Luck
0733673411

FOR SALE

This thoughtfully renovated home offers modern design, spacious interiors, and versatile living options, all in a prime location. Perfect for families, professionals, or those seeking a home with dual-living potential, this property is ready to impress. On the main level, you will find 3 bedrooms, a modern bathroom and open plan living – featuring a modern kitchen, dining area, and lounge for seamless entertaining. There is also an expansive covered deck – perfect for relaxing or entertaining, with tranquil views over the fully fenced backyard. On the lower level, you will find the versatile multi-purpose space – ideal for a home office, guest suite, or extra living area, along with a beautifully designed modern bathroom and the laundry and storage. The lower level second deck has an outdoor BBQ Kitchen - perfect for al fresco dining and enjoying Brisbane's outdoor lifestyle. Additional Features:- Single carport with additional off-street parking.- Fully fenced yard – safe and secure for children and pets.- Prime Bardon location – close to schools, shops, and public transport. Situated in a quiet yet convenient pocket of Bardon, this home is perfect for those who value style, comfort, and versatility. Whether you're unwinding on the deck, entertaining friends in the outdoor kitchen, or enjoying the multi-purpose space, this property offers a lifestyle tailored to your needs. Don't miss this exceptional opportunity – homes like this don't last long. Contact us today to arrange your inspection and make 83 Lewin Street, Bardon your next home! This property is being sold without a price and therefore a price guide cannot be provided. The website may have filtered the property into a price bracket for website functionality purposes only.