

9 Chambered Way, Jindalee, WA, 6036

ACTON

belle
PROPERTY

House For Sale

Sunday, 3 November 2024

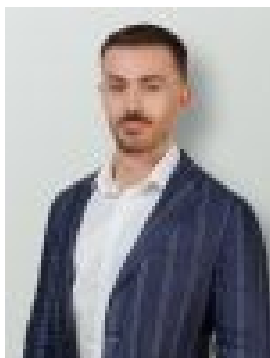
9 Chambered Way, Jindalee, WA, 6036

Bedrooms: 4

Bathrooms: 2

Parkings: 2

Type: House



Thomas Whitford

0447200378

Picture Your New Coastal Life Here

9 Chambered Way in Jindalee might just be your next "pinch me" moment.

Here's the scoop:

- Breeze Through the Seasons: We've got ducted zoned air con - every room stays just how you like it.
- Plenty of Elbow Room (room for activities): Four big bedrooms and two baths. Bring the family, or don't - your call!
- Mix, Mingle, & Chow Down: An open-plan setup links the kitchen to the living areas. Ideal for parties or chill nights.
- Popcorn Ready?: Separate theatre room. Perfect for Netflix binges and chill.
- Travel Light: Park two cars in the front-access double garage. Forget weekend chores with easy-keep gardens.

Living the Beach Life

Eden Beach is your backyard. Coffee or cocktails at Beach House Bar & Restaurant? Yes, please!

Plus:

- Family parks, schools, and shops are all a stone's throw away.
- Quick, easy access to Butler Train Station and Mitchell Freeway via Butler Blvd.
- Dining spots galore along the northern coast.

House Perks

- Fancy a grand entrance? It's yours with a timber door entry.
- A kitchen that'll make your foodie friends jealous. Check out the pantry size.
- A primary bedroom with a walk-in closet and posh ensuite.
- Three more bedrooms all set with built-ins.
- Outdoor area set for your next BBQ.
- Low-key garden? Check. Waterwise plants and more mean you relax, not toil.

Block Size: 450m²

Internal: 191m²

Built: Circa 2015

Investment Info

Council Rates: Approx. \$1950

Water Rates: Approx. \$1050

Rental Estimate: Mid \$800s

Imagine settling here? Let's chat

Cheers,

Thomas Whitford | 0447 200 378