

**9 Hitching Rail Drive, Tanby, Qld 4703**



**House For Sale**

Friday, 3 January 2025

9 Hitching Rail Drive, Tanby, Qld 4703

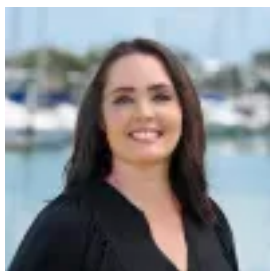
**Bedrooms: 5**

**Bathrooms: 2**

**Parkings: 8**

**Area: 4000 m2**

**Type: House**



Leisa Richardson

0427251008

## Your Dream Acreage Awaits!

Discover the perfect blend of style, space, and serenity with this beautifully renovated, low-set 5-bedroom family home. Nestled in a prestigious acreage estate, this property offers the ultimate lifestyle just minutes from beaches, marinas, and town conveniences.

**Features You'll Love:**

- Spacious Living:** Two internal living areas provide room for everyone to relax and unwind.
- Chef's Kitchen:** A dream kitchen boasting stone countertops, a large island with ample storage, a 900mm Smeg gas stove, a dishwasher, and a double pantry-perfect for culinary adventures.
- Renovated Elegance:** Fresh carpets, paint, plantation shutters, air conditioning and stunning updates to the kitchen, bathrooms, and laundry.
- Perfect Design:** Master suite on the northern wing of the home with nursery/home office close by for convenience. Main bathroom on southern wing services remaining bedrooms and visitors.
- Outdoor Bliss:** Entertain in style under the expansive, approx. 50m of alfresco dining space, featuring a built-in BBQ. Dive into the adjoining sparkling fiberglass inground pool, complete with a relaxing Bali hut to elevate the tropical vibe.
- For Him:** A massive 12m x 12.5m powered shed with a sealed floor, provision for a car hoist, and a plumbed toilet-ideal as the ultimate man cave or workshop.
- Prime Location:** Approx. 5 mins to Kinka Beach  
Approx. 9 mins to beautiful Emu Park  
Approx. 12 mins to Keppel Bay Marina  
Approx. 13 mins to Yeppoon Central

This family-friendly haven is not just a home; it's a lifestyle. Don't miss your chance to secure your dream property in this sought-after estate. Contact Leisa Richardson on 0427 251 008 today to book a private viewing and make this acreage oasis yours!