

**95 Pacific Road, Palm Beach, NSW, 2108**



**House For Sale**

Monday, 12 August 2024

95 Pacific Road, Palm Beach, NSW, 2108

**Bedrooms: 5**

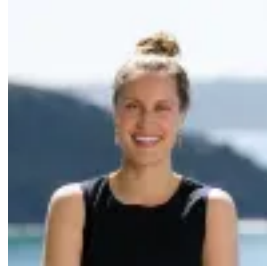
**Bathrooms: 4**

**Parkings: 2**

**Type: House**



Noel Nicholson  
0299742300



Tara Jaijee  
0299742300

## Exquisite Palm Beach Retreat with Architectural Redesign

Picture waking to the chorus of ocean waves and the iconic silhouette of Barrenjoey Headland gracing the horizon. This extraordinary reality awaits at this luminous, north-facing residence, positioned at the prestigious lower end of Pacific Road, meticulously redesigned and renovated by award-winning architect Chris Howe.

Boasting a luxe, contemporary aesthetic, the dual-level design reveals a haven of light and elegance. Soaring double-height ceilings framed by exposed trusses create a sense of spacious freedom. Meanwhile, walls of glass blur the lines between indoors and out, and French doors connect to sun-drenched terraces, a sparkling saltwater pool, and lush tropical gardens.

The open-plan island kitchen, adorned with Calacatta marble and glass-fronted cabinets, beckons grand celebrations or intimate gatherings, accompanied by a vast living and dining space adorned with richly textured interiors and premium finishes.

On the lower level, four luxuriously appointed bedrooms, each with custom wardrobes and ensuites, offer tranquil accommodation for family and guests. The private master wing is a blissful oasis, opening directly to the terrace and pool while showcasing a relaxing sitting room, ensuite with bathtub, and his-and-hers wardrobes.

But this masterpiece extends beyond just aesthetics. The retreat is a smart home where security, lighting, heating, automated windows and external louvres, and even the surf cam, can all be controlled remotely. Every detail has been considered and executed to the highest degree, creating an exclusive living experience where prestige and luxury meet.

- North-facing residence with panoramic views from the Pittwater to the ocean
- Architecturally redesigned and renovated over three years
- Luxe, contemporary coastal aesthetic with a dual-level floorplan
- Soaring double-height ceilings framed by exposed trusses
- French doors lead out to decks, terraces, a 12.5m pool, and a dining cabana
- Entertainer's kitchen with Calacatta marble, glass-fronted cabinets, and 900mm Ilve oven
- Expansive living and dining space with a regal Jetmaster fireplace
- Four bedrooms on the lower level, each with custom wardrobes and ensuites
- Private master wing with terrace and pool access, sitting room, ensuite, and walk-in
- Philips DALI home automation with remote security, lighting, windows, blinds, and heating control
- Additional powder room, dedicated study (or 5th bedroom), plus gym or workshop
- Single car garage designed and constructed to allow for future car stacker to be installed
- Zoned climate control, automated garden irrigation system

Inspection by appointment. Please contact Noel Nicholson on 0411 884 290 or Tara Jaijee on 0423 737 826 to register your interest.