

1 Emily Road, West Moonah, TAS, 7009

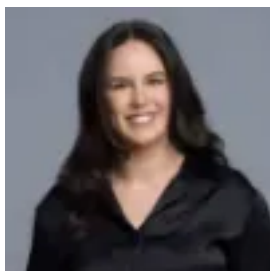
PETERSWALD
for property

Land For Sale

Wednesday, 20 November 2024

1 Emily Road, West Moonah, TAS, 7009

Type: Land



Lucinda Scutt
0400614752

Opportunity to build your dream home

Occupying a fantastic position with picturesque water views, sits this vacant allotment high above West Moonah. Create your ideal home in a family friendly location, whilst sitting only minutes from schools, parks, and transport.

This parcel of land offers relaxing vistas across neighbouring suburbs and beyond, whilst also having the ability to store items in the lock up space.

Hobart's CBD and the Moonah shopping strip is just minutes away by car, with restaurants, cafes, shops, and major supermarkets, along with the superb amenities of nearby New Town and Lenah Valley.

Ideally situated, this impressive allotment will provide the perfect canvas to build a spacious home (STCA) filled with contemporary comfort.

Zoning: General Residential

Council Rates: \$500 pa approx