

12 Maynard Cl, Mount Sheridan, QLD, 4868

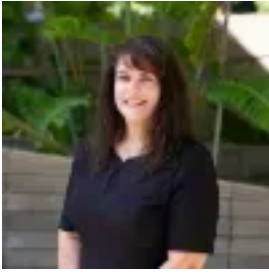
Land For Sale

Sunday, 10 November 2024

RayWhite

12 Maynard Cl, Mount Sheridan, QLD, 4868

Type: Land



Gisele George

Spectacular Views Forever - Elevated Land - 2610m2

Amazing opportunity to secure this outstanding block of elevated land with 220 degree breathtaking views of the Pyramid and potential city/water views. Situated in a convenient location, this block is the best Mount Sheridan has to offer. Be amongst other high quality established homes in the street, this block gives the owner the opportunity to build their dream home without the fear of being built out.

The block has recently been surveyed and is large enough to consider subdivision subject to council approval. Excellent mapping status with minimal restrictions.

2610m2 is all yours with access from a concrete driveway that leads straight up to the terraced block. Ready for immediate build, within minutes to major Shopping Centres, schools and 10 minutes to the Cairns CBD.