

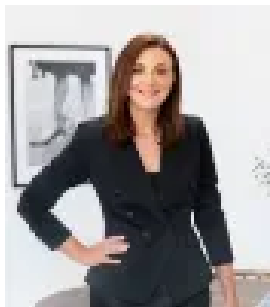
226 Liverpool Road, Goolwa, SA, 5214

Land For Sale

Thursday, 24 October 2024

226 Liverpool Road, Goolwa, SA, 5214

Type: Land



Gena Nash

Goolwa's Gateway to Opportunity

Nestled in the vibrant heart of Goolwa, 226 Liverpool Road offers an exciting opportunity of unlimited potential. This remarkable property boasts a generous 729sqm corner allotment, with breathtaking views of the river. Imagine greeting each day with a steaming cup of coffee, the tranquil river serving as your backdrop, while the surrounding playgrounds, bike tracks, and local boutiques invite exploration in this spirited coastal haven.

Strategically positioned opposite the verdant Richard Ballard Reserve, this cleared and fenced allotment presents an open canvas for your dream home, with all essential services available, the property seamlessly combines functionality with opportunity.

Perfectly aligned to capture the refreshing summer breezes, the location is a front-row seat for Goolwa's captivating fireworks on New Year's Eve. Moreover, the potential for subdivision adds another layer of allure, making this not just a purchase, but a strategic investment.

Thriving with lifestyle prospects, this property places you within walking distance of the charming Goolwa township and the bustling Wharf Precinct, promising a life punctuated by leisure and discovery.

Key Features:

- 729sqm corner allotment
- Dimensions, approx. 32m x 22m
- Plans available for double-storey home
- Subdivision potential
- All services available for connection with SA Water and STEDS system in place.
- Prime lifestyle location near township and Wharf Precinct