

**242 Errol Boulevard, Mickleham, Vic 3064**

**DI BATTISTA**

**Residential Land For Sale**

Thursday, 14 March 2024

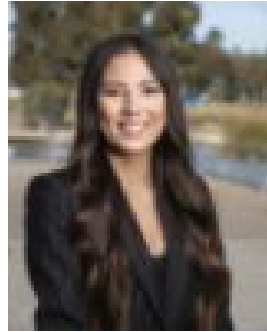
242 Errol Boulevard, Mickleham, Vic 3064

Area: 507 m2

Type: Residential Land



Rocco Di Battista  
0425728002



Vanessa Loblely  
0477677855

**\$520,000**

This conveniently situated titled corner allotment offers an exceptional opportunity to realise your vision and construct a stunning new family residence in the vibrant Merrifield neighbourhood. Spanning approximately 507 square meters, gentle topography, providing an ideal canvas for bringing your dream home to fruition. The area's allure lies in its convenient lifestyle offerings, with a wealth of amenities and attractions nearby, including the Merrifield City Shopping Centre and convenient access to the Hume Freeway. Within walking distance of Summit Park, the property also enjoys proximity to the Errol Boulevard bus stop and the Merrifield Recreation Reserve, featuring sought-after sports facilities, a children's playground, and a fenced dog park. Furthermore, residents have access to various educational institutions such as Mickleham Secondary College, Darul Ulum College, Gaayip-Nagila Primary School, and Holy Cross Primary School, along with childcare facilities. This is the perfect opportunity to secure the ideal plot for your dream home. Don't let it slip away!