

42 Wallcrest Road, Berriedale, TAS, 7011

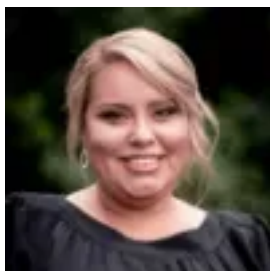
Raine&Horne.

Land For Sale

Saturday, 23 November 2024

42 Wallcrest Road, Berriedale, TAS, 7011

Type: Land



Sam Johnston

Level block. Priced to sell!

On offer is fantastic, virtually flat block with sensational views. Measuring 593m² this one is sure to impress.

Capturing all day sun and some of the best water views the Northern Suburbs has to offer. Services are in and this one is ready to start building on.

Approx. 20 minutes drive to Hobart CBD, 7 minutes to all that Glenorchy has to offer, plus the Claremont shopping precinct is only 5 minutes away. Close proximity to a range of amenities including shops, schools and public transport.

Be quick. this one is priced to sell!

All measurements are approximate and details intended to be relied upon should be independently verified. The particulars contained in this advertisement do not form any contract. While care has been taken in its presentation, no representation is made and no responsibility is accepted for the accuracy of the whole or any part and interested persons are advised to make their own enquiries and satisfy themselves in all respects.