

**65 Gilley Lane, Barwite, Vic 3722**

**Lifestyle For Sale**

Thursday, 9 January 2025



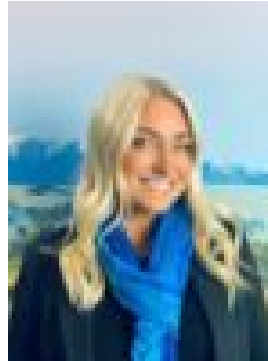
65 Gilley Lane, Barwite, Vic 3722

Area: 467000 m2

Type: Lifestyle



Jenny Gould  
1300222262



Allana Storer  
1300222262

**\$950,000 - \$1,045,000**

If your idea of paradise is somewhere completely private and peaceful, where you can build an off-grid home to escape from the madness of city life, then look no further! There's about 115 acres here, with a sheltered homesite boasting breath-taking views over the Barwite valley to Lake Eildon and The Paps. The sunsets are spectacular as are the incredible starry night skies. A new all weather access track has been created to access the property, but please send an enquiry or call to arrange a site visit as you may not find the entry without a little guidance. One of the biggest attractions of this property is that it is a little off the beaten track. That said you can be on the slopes of Mt Buller for first tracks or pop into the booming regional town of Mansfield for supplies and be back home well within an hour. Maybe a little longer if you stop for coffee at one of the great cafes. A local farmer currently agists his cattle on the land and would be happy to continue that arrangement, unless you wanted to run your own stock as a primary producer. There's lot of other exciting income generating options too. We can provide information about tiny home holiday accommodation options and a potential carbon forestry project. There are already so many magnificent gum trees and a lush mini-rainforest, complete with tree ferns, in the sheltered valley. Wildlife is amazing and abundant, including some majestic eagles that return to nest every year. We hear that the human neighbours are pretty nice too!