

**2/8 Park View Crescent, Maydena, Tas 7140**

**Residential Land For Sale**

Wednesday, 8 January 2025



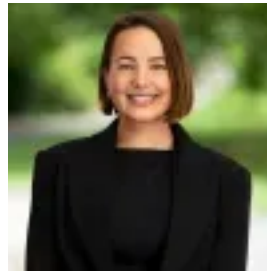
2/8 Park View Crescent, Maydena, Tas 7140

Area: 802 m2

Type: Residential Land



Jeff Hamilton  
0404888538



Bree Harrison  
0400770514

## Offers Over \$165,000

Located in the heart of Maydena, this residential land offers the perfect opportunity to build your dream home, or holiday getaway, in a peaceful and picturesque environment. Maydena is a charming town nestled within the stunning Tasmanian wilderness, renowned for its outdoor adventures and proximity to the renowned Mount Field National Park. The area is also home to the popular Maydena Bike Park, making it an ideal location for avid mountain bikers. This parcel of land offers ample space to design and build your perfect retreat, surrounded by the breathtaking beauty of Tasmania's lush landscapes. Located on a quiet cul-de-sac, this is perfect for those who want to slow down and get away from the hustle and bustle of city living. The land is gently sloping and ready for development. Whether you're looking to settle in a quiet community or invest in a property with future potential, this piece of land is an exceptional opportunity. Don't miss out on the chance to own a slice of Tasmania's natural beauty in one of its most desirable locations. The information contained herein has been supplied to us and we have no reason to doubt its accuracy, however, cannot guarantee it. Accordingly, all interested parties should make their own enquiries to verify this information.