

**20 Harvey Street, Newborough, Vic 3825**

**Residential Land For Sale**

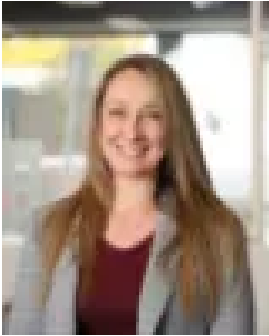
Tuesday, 7 January 2025



20 Harvey Street, Newborough, Vic 3825

Area: 847 m2

Type: Residential Land



Emma Dawson

**\$240,000 - \$260,000**

Unlock the potential of this exceptional parcel of residential land located at 20 Harvey Street, Newborough. This generous 847sqm (approx) lot offers the perfect canvas for your future residence, ensuring a lifestyle of convenience. Situated in the popular and tightly held area of 'Old Newborough', where this walk-to location sees you minutes from pre, primary and secondary schools, Newborough Village, sports & recreational facilities as well as quick M1 Freeway access. A wide street frontage of approximately 17.5 metres leaves plenty of scope for a home design of your choice, as does the relatively flat landscape. For your everyday conveniences, the City of Moe, offering rail, supermarkets, medical centres and services is approximately 3.5km away, while local attractions such as Walhalla, Mt Baw Baw Ski Resort, beaches and several national parks are all within easy reach.