

392 Diamond Valley Road, Diamond Valley, Qld 4553

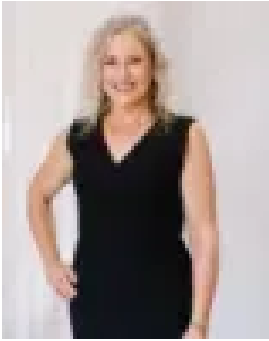


Residential Land For Sale

Monday, 20 January 2025

392 Diamond Valley Road, Diamond Valley, Qld 4553

Type: Residential Land



Cassi Nuske



Jo Daley

Buyers in the mid \$1m's

Seize the chance to secure a stunning 2.36-hectare parcel of land, boasting 200 meters of uninterrupted Mooloolah River frontage. Located in the tranquil Sunshine Coast Hinterland, this property combines breathtaking natural beauty with an unbeatable location, offering a wide variety of exciting possibilities. Just minutes from the village centre of Mooloolah Valley, this unique parcel of land offers convenient access to local cafes, services, and a grocery store. For those seeking peaceful country living together with easy access to city connections, the Mooloolah Valley train station is minutes away, providing regular services to Brisbane. With its vast potential, this land is ideal for building your dream country home, launching a home-based business, or pursuing a range of other ventures. The existing infrastructure, remnants of a former sawmill, could be repurposed into horse stables or caravan storage. Other exciting possibilities include short-term holiday accommodation (up to 8 holiday cabins), glamping sites, nature-based tourism, or a variety of rural activities. (Subject to council approval) Whether you're seeking to create a serene riverside retreat or establish a home business lifestyle, this property presents an abundance of opportunities. The true beauty and potential of the land can only be fully appreciated in person. Don't miss this rare chance to secure your own slice of country paradise in the picturesque Sunshine Coast Hinterland. Inspections are by appointment only. Please contact Cassi or Jo to arrange a viewing opportunity. Key features include: 2.36 hectares or 5.8 acres of cleared land 200m of pristine Mooloolah River frontage Rural zoned land offering potential for a plethora of home-based businesses, residential, and rural activities 5-minute drive to Mooloolah Valley town centre Less than 5km to Brisbane City rail services 30 minute drive to Sunshine Coast beaches 60 minute drive to Brisbane Airport 90 minute drive to Brisbane CBD Disclaimer: Whilst care is taken in the preparation of this marketing, McGrath Coast & Hinterland will not be held liable for errors in typing or information displayed. All parties should rely upon their own enquiries to determine whether this information is accurate.