

Address available on request, Jimboomba, Qld 4280

SOUTHSIDE



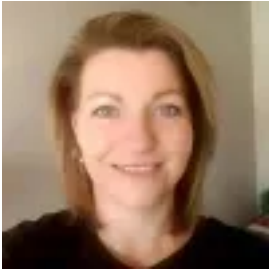
Residential Land For Sale

Thursday, 9 January 2025

Address available on request, Jimboomba, Qld 4280

Area: 655 m2

Type: Residential Land



Melissa Barry
0411737004

\$449,000

This amazing ELEVATED pocket of land is located in the sought after estate 'The Village at Jimboomba'. Located in a lovely quiet part of the estate, just a short stroll from Byron Park, this block ticks every single box! We have recently released our very last blocks in The Village at Jimboomba. Don't miss out! • REGISTERED LAND! Ready to build on • NBN ready • Short stroll to Byron Park, boasting a half Basketball Court, Kids Playground, Workout Equipment, Kick and Throw Areas • 6X6M Sheds approved • And much, much more Build your dream home in one of South East Queensland's most popular growth corridors. Call Melissa on 0411 737 004 today for more information! Terms and Conditions apply. Images are for illustration purposes only. Prices are correct as at 09/01/2025