

**1/62 Cowles Rd, Mosman, NSW, 2088**



**Semi-detached For Sale**

Friday, 22 November 2024

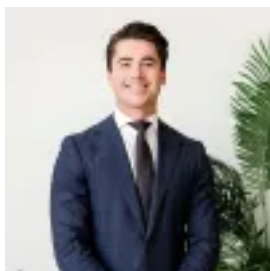
1/62 Cowles Rd, Mosman, NSW, 2088

**Bedrooms: 2**

**Bathrooms: 1**

**Parkings: 1**

**Type: Semi-detached**



Titan Davis



Mitchell Soineva

## Sunlit semi at heart of premier Mosman precinct

A walled, sundrenched courtyard leads to this expansive semi with a northern aspect that bathes the interiors in natural light. 1930s double brick build integrity and classic elegance is complemented by a revitalised decor while the home also offers the scope for adding further elements of contemporary style. Offering complete privacy and serenity it's in a superb location, close to Mosman's premier lifestyle advantages including eclectic shopping and leading schools plus swift access to the CBD.

- Spacious lounge room with adjoining dining/media room opens to courtyard
- New gourmet kitchen, stone surfaces, gas, pantry & ample cabinet storage
- Expansive main bedroom with leadlight windows, serene double bedroom
- High ceilings, pristine original features, swathes of broad timber flooring
- Sundrenched, secure rear lawn, alfresco dining, ideal children's play area
- Modern bathroom, garden storage shed & laundry/workshop, shared parking
- Excellent condition & superb location, scope for strong investment yield
- 300m on Art Gallery Way to Allan Border Oval playing fields & parklands
- 400m stroll to Mosman Village plus B-Line CBD & Beaches express buses
- Near Mosman Kindergarten, Public & High schools, Mosman Prep, Redlands