

1/15a Burt Crescent, Hampton East, Vic 3188



Townhouse For Sale

Wednesday, 15 January 2025

1/15a Burt Crescent, Hampton East, Vic 3188

Bedrooms: 2

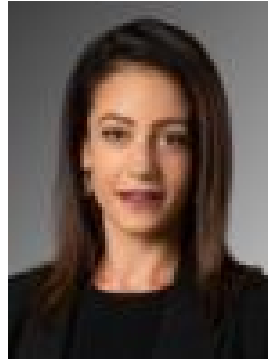
Bathrooms: 2

Parkings: 1

Type: Townhouse



Paul Sibley



Natalie Falvo
0395550622

\$975,000 - \$1,050,000

Stylish and brilliantly designed, this architectural two-bedroom, 2.5-bathroom, two-storey executive residence is ready to impress. Move in and enjoy the comfort of a light-filled, north-facing open-plan living space that flows seamlessly to an entertainer's courtyard. Work from home with ease in the versatile first-floor study retreat. Benefit from the clever dual-suite layout, featuring a deluxe dual-vanity bathroom for each bedroom – including a private ensuite for added luxury! Showcasing premium designer finishes, the state-of-the-art Smeg appliance kitchen is highlighted by a sculptural stone-wrapped dining bench. This reverse-cycle air-conditioned home boasts sophisticated interiors with matt-black tapware, smoked-glass splashbacks, bespoke cabinetry, wideboard Oak floors, and tall 2.4m doors that complement soaring 3m ceilings. Complete with a video intercom system and an auto-garage on an exposed aggregate driveway, this Bayside residence is perfectly positioned to enhance your lifestyle. Start your day with a jog at Boss James Reserve, enjoy Hampton St's vibrant cafes and restaurants, and take advantage of nearby stations for a convenient commute. Discover the lifestyle, comfort, and convenience this remarkable property has to offer. For more information, contact Paul Sibley from Buxton Hampton East on 0403 325 423.