

11/1 Winton Street, Burwood, VIC, 3125



Townhouse For Sale

Thursday, 24 October 2024

11/1 Winton Street, Burwood, VIC, 3125

Bedrooms: 3

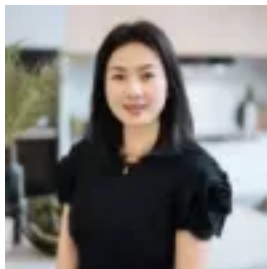
Bathrooms: 3

Parkings: 2

Type: Townhouse



JM Lim
0398898800



Ripple Wu
0398898800

Please contact agent for private inspection

Convenience and luxury close to all amenities

Luxuriously appointed and located within the coveted Mount Waverley Secondary College zone, this architecturally designed town residence features a family-friendly configuration of three spacious bedrooms, three bathrooms and a double garage.

The open plan ground floor living spaces invite the outdoors in with floor-to-ceiling glass doors opening out onto the landscaped alfresco zones, with oak timber flooring throughout. Entertainers will love cooking up a storm in the gourmet kitchen with Carrara reconstituted stone surfaces, Miele appliances and 2-pac glass and timber laminate cabinetry. Serene and indulgent, the bathrooms boast magnificent hexagon-patterned feature walls, mirrored cabinets and floating timber vanities.

With a leafy outlook framed by local parks, enjoy the lifestyle of choice and convenience provided by the close proximity to restaurants, cafes and schools. Nearby schools include Parkhill Primary School, Mount Scopus Memorial College, Deakin University and the prestigious Presbyterian Ladies College.

Close to trams, Mount Waverley train station and both the Monash Freeway and EastLink, Burwood Heights Shopping Centre and Burwood Brickworks are seven to ten minutes away on foot, with Burwood One Shopping Centre only 2km away and The Glen, Chadstone and Forest Hill Chase shopping centres all within a short drive.

- Two levels with three bedrooms, three bathrooms and a double garage
- Open plan ground floor living spaces
- Master bedroom with ensuite and private balcony
- Stone kitchen surfaces including splashback, Miele appliances included
- Beautiful bathroom tiling with mirrored cabinets, floating timber vanities
- Quiet leafy outlook
- Located within the Mount Waverley Secondary College zone
- Close to Parkhill Primary, Mount Scopus Memorial College, Deakin Uni, PLC
- Walking distance from nearby cafes and restaurants
- Close to trams, Mount Waverley train station, Monash Freeway and EastLink
- Walk to Burwood Heights and Burwood Brickworks Shopping Centre
- Easy drive to Burwood One SC, The Glen, Chadstone SC, Forest Hill Chase SC

Note: Photos featured here are of another unit in the same development and are for illustration purposes only.