

**13/27 Canberra Street, Oxley Park, NSW, 2760**



**Townhouse For Sale**

Friday, 15 November 2024

13/27 Canberra Street, Oxley Park, NSW, 2760

**Bedrooms: 3**

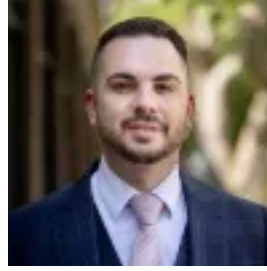
**Bathrooms: 2**

**Parkings: 2**

**Type: Townhouse**



Amber Boumelhem  
0452669516



Peter Diamantidis  
0296234033

## **Largest 3 Bedroom Townhouse! | 2 Courtyards!**

We are pleased to present 13/27-31 Canberra Street Oxley Park brought to you by Amber Boumelhem.

This immaculately presented 3 bedroom townhouse is situated in a well-maintained complex and has a front and backyard!!!!

The convenient location provides easy access to Queen Street shops, St Marys Village, schools and St Marys Train Station which is soon to be a Metro stop for the new Airport currently under construction.

Whether you're a first-time buyer or an investor, this property is a must-see!

### **WHAT WE LIKE ABOUT THESE TOWNHOUSES:**

- Townhouse consists of 3 bedrooms
- Built-in wardrobes to all bedrooms
- Ensuite to main bedroom with a third toilet downstairs
- Bright modern kitchen including gas cooking & stainless steel appliances with dishwasher
- Ducted air conditioning with 2 zones
- Tiled living areas and timber flooring to the bedrooms
- Blinds, alarm, landscaping all included
- Automatic garage with internal access and second allocated car spot
- Fully landscaped and fenced to front and backyard
- Street facing!
- Only 4 years old!

For further information, contact Amber Boumelhem 0452 669 516 or Peter Diamantidis 0404 051 702.

Disclaimer: The above information has been gathered from sources that we believe are reliable. However, we cannot guarantee the accuracy of this information and nor do we accept responsibility for its accuracy. Any interested parties should rely on their own enquiries and judgment to determine the accuracy of this information for their own purposes. Images are for illustrative and design purposes only and do not represent the final product or finishes.