

16/34 Lowerson Street, Lutwyche, Qld 4030



Townhouse For Rent

Wednesday, 8 January 2025

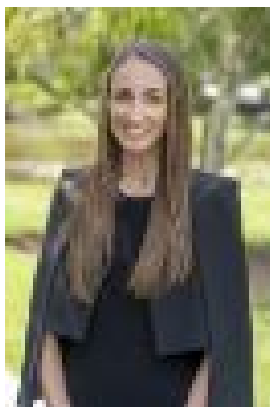
16/34 Lowerson Street, Lutwyche, Qld 4030

Bedrooms: 2

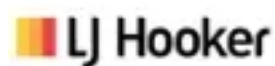
Bathrooms: 1

Parkings: 1

Type: Townhouse



Sarah Ross
0731020829



Office Shailer Park
0731020829

\$550pw

Discover the perfect blend of convenience and comfort in this beautifully presented townhouse, ideally situated in the heart of Lutwyche. With its prime location just 5km from Brisbane's CBD and 2.5km from the Royal Brisbane Hospital, this property is perfect for city commuters and anyone seeking a vibrant lifestyle close to shops, transport, and amenities.

Property Features:

- Modern Kitchen:** Includes a dishwasher
- Open-Plan Living:** Open plan lounge and dining area with plenty of natural light.
- Two Bedrooms:** Bedroom one is airconditioned and both bedrooms have built ins and balconies featuring floor to ceiling glass sliding doors
- Private Courtyard:** Fully fenced, perfect for alfresco dining or relaxing afternoons.
- Internal Laundry:** Hidden for practicality and style.
- Complex Amenities:** Enjoy access to a sparkling pool, a covered BBQ area, and landscaped grounds.
- Secure Parking:** Single carport included.
- Peace of Mind:** Security screens throughout.

Location Highlights: Walking distance to Lutwyche City Shopping Centre, gyms, restaurants, and parks. Easy access to public transport, schools, and major arterial roads. Quick connectivity to Brisbane Airport and the Sunshine and Gold Coasts via the tunnels. This quiet and well-maintained complex offers everything you need for a low-maintenance and enjoyable lifestyle.

Note: This property is unfurnished.

Inspection & Application: To register for an inspection or apply for this property, please send an enquiry. You'll receive an automated email with links to book your viewing and submit your application. Don't miss out on this fantastic opportunity—contact us on 07 3102 0829 today!