

19/24 Walsham Street, Bray Park, QLD, 4500



Townhouse For Sale

Thursday, 21 November 2024

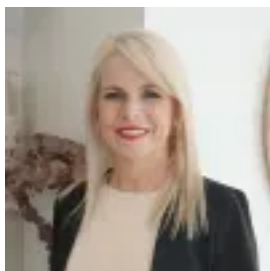
19/24 Walsham Street, Bray Park, QLD, 4500

Bedrooms: 4

Bathrooms: 2

Parkings: 2

Type: Townhouse



Nichole Caple

Spacious 4-Bedroom Townhouse: Near-New Living in Tranquil & Central Location

Experience modern parkside living in this near-new, spacious 4-bedroom, 2-bathroom townhouse located within the sought-after 'The Landing Parkside' development in Bray Park. Designed for low-maintenance yet private and tranquil living, this home is perfectly positioned next to John Bray Park, with Pineapple Farm Park, Kensington Village Bray Park, featuring Coles, and picturesque river walks right at your doorstep. Convenience abounds with Bray Park and Strathpine train stations within walking distance, Strathpine Centre just a 3-minute drive away, and Brisbane City a mere 35-minute commute.

The ground floor boasts a contemporary kitchen featuring quality appliances, stone benchtops, and ample storage. The open-plan design seamlessly connects the kitchen, dining, and living spaces, flowing out to an outdoor alfresco area surrounded by manicured gardens and complete with a garden shed. A powder room on this level provides added convenience for guests. Upstairs, you'll find a second living area, perfect as a family retreat, along with the spacious master bedroom featuring a walk-in robe and ensuite, plus three additional bedrooms serviced by a modern main bathroom.

Comfort is assured with air conditioning and ceiling fans throughout, while a double lock-up garage adds practicality. This prime location, with its proximity to schools, shops, cinemas, and the USC Petrie Uni Campus, offers an exceptional opportunity for investors seeking strong rental demand or buyers looking for a low-maintenance, modern lifestyle. Perfectly suited to families, professionals, and downsizers, this property combines convenience, comfort, and great future growth potential.

- Spacious townhome with four generously sized bedrooms & multiple living areas
- Expensive main bedroom equipped with ensuite and generous walk-in-robe
- Open plan living area with ample natural light & separate dining space adjacent to kitchen
- Modern kitchen with stone benchtops, quality appliances and ample storage
- Outdoor alfresco overlooking manicured gardens, also featuring a garden shed
- Double lockup garage, air-conditioning to main bed & living area plus ceiling fans throughout
- Short drive to Strathpine Centre, featuring major retailers, dining, and entertainment options.
- Close to local schools, including Bray Park State School and Genesis Christian College.

Bray Park, situated in Brisbane's thriving northern corridor, offers residents a serene retreat with effortless access to essential amenities. Just a short drive away, Strathpine Centre boasts a variety of shopping, dining, and entertainment options, including cinemas and major retailers. Families are well-catered for with highly regarded schools and the USC Petrie University Campus nearby. The Landing development enhances the area's appeal, with 50% dedicated to lush green open spaces, while nearby parks like John Bray Park and scenic river walks provide the perfect spots for relaxation. With Bray Park train station just 850m away and quick access to major highways, commuting and weekend adventures are a breeze.

Inspect with Caple Properties today!

DISCLAIMER: In preparing this information, we have used our best endeavours to ensure that the information contained therein is true and accurate but accept no responsibility and disclaim all liability in respect of any errors, inaccuracies or misstatements contained herein. Prospective purchasers should make their own inquiries to verify the information contained herein. All information is provided as a convenience to clients.