

2/62 Marlborough Street, Bentleigh East, VIC, 3165

buxton

Townhouse For Sale

Thursday, 5 December 2024

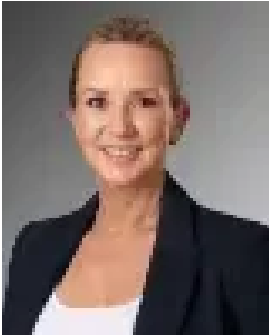
2/62 Marlborough Street, Bentleigh East, VIC, 3165

Bedrooms: 4

Bathrooms: 2

Parkings: 2

Type: Townhouse



Kylie Block



Craig Williamson

Standalone Classic in 2 School Zones

Stand out from the pack with a twice the in-Zone opportunity. Standing alone with an impressive frontage to Latham St. this up to four bedroom, 2.5 bathroom home represents outstanding family value with a completely private north-rear block, a big double auto-garage and a blue-chip position in both the McKinnon Secondary College and Coatesville Primary School Zones.

Cleverly accommodating with a grand master-suite taking pride of place on a dedicated first-floor bedroom level, this spacious home is ready to welcome a growing family with space for work and play in a flexible ground-floor fourth bedroom - positioned to double as home-office or additional living space.

With room to lounge with a front garden view and space to dine in a relaxed tiled area beside the quality appliance kitchen, this classic home is timeless by design; from its high-gabled facade to its sunny north-facing facing backyard. High on quality with an elegant ensuite plus big main bathroom with separate WC, there's family-wise storage including built-in and walk-in robes, a big full-sized family laundry and fully-fenced gardens front and rear.

Ready to relax right now with value-adding potential for a cosmetic upgrade when the time is right, this is an invaluable opportunity in the Zones for two of Melbourne's most in-demand schools. Just 150m to Marlborough St Reserve (and a walk on through to a McKinnon College campus), and six blocks to Coatesville Primary, this family classic is close to handy Mackie Rd shops, and minutes to stations, hospitality strips and Chadstone shopping centre.