

**2 Cliffe Lane, Edithvale, Vic 3196**



**Townhouse For Rent**

Wednesday, 8 January 2025

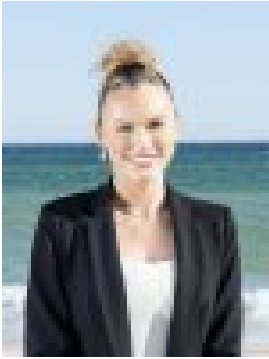
2 Cliffe Lane, Edithvale, Vic 3196

**Bedrooms: 3**

**Bathrooms: 2**

**Parkings: 2**

**Type: Townhouse**



Briedi Gibson  
0460965959

**\$1025 per week**

TOWNHOUSE 2D & TOWNHOUSE 2C -These stylish & sophisticated custom designed townhouses in excess of 30 squares are exceptional in size and feature fixtures & fittings not typically found in a rental property. With Edithvale foreshore, schools, shops, sporting & recreational facilities and transport all nearby, plus being positioned in a peaceful lane with no thru traffic, this location is ideal for families. When entering Unit 2D you're welcomed by an impressively large formal entrance, Unit 2C offering a formal entrance with an adjoining study, both with powder rooms and adjacent under-stair storage. The ground floors of each showcase superbly fitted kitchens including Smeg appliances, induction cooktops, butler's pantries and wine fridges. The spacious open plan family rooms feature 3 metre ceilings and provide ample space for dining and living with tri-fold doors leading onto patios and the beautifully landscaped gardens. Separate laundries are conveniently located off the kitchens. The first levels feature 2.7 metre ceilings and provide an additional living space perfectly suited for studying or a children's retreat. The 3 bedrooms are spacious and offer ample built-in robe space, the mains with private terraces, walk-in robes also fitted with built-in robes, dual roller blinds & ceiling fans. All have separate split system heating & cooling. The stunning en-suite bathrooms each have double vanities and are fully tiled with floor heating. The family bathrooms feature stunning baths, have separate shower recesses and also offer floor heating. Each with separate toilets. Additional features include -

- Remote lock up garages (2D a double & 2C a single) with direct internal access and epoxy coated flooring
- Hitachi remote ducted heating/cooling units
- Plenty of storage space
- Sky-lighting
- Water tanks
- Luxurious wool carpets
- Quality window furnishings

\*\*\* Please note - photos show images of both 2D and 2C \*\*\*