

**7/128 Crimea Road, Marsfield, NSW, 2122**

**Townhouse For Sale**

Wednesday, 15 January 2025

7/128 Crimea Road, Marsfield, NSW, 2122

**Bedrooms: 2**

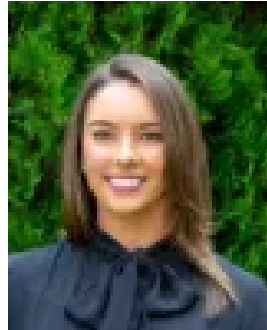
**Bathrooms: 1**

**Parkings: 1**

**Type: Townhouse**



Allison Mifsud  
0405138408



Danielle Jenkins  
0459341200

## Full Brick with Only One Common Wall

This beautifully presented full-brick townhouse perfectly blends comfort, style, and convenience. Featuring a modern, updated kitchen with sleek finishes, it's an ideal home for those who love to entertain or enjoy cooking in a contemporary, functional space.

The spacious living and dining areas are enhanced by timber flooring, creating a warm and inviting atmosphere. Upstairs, you'll find two generous bedrooms, while the well-appointed bathroom includes both a separate bath and shower.

- \* Only one common wall, allowing for extra natural light
- \* Both bedrooms with built-in wardrobes
- \* Full bathroom upstairs, plus a second guest WC downstairs
- \* Open-plan lounge/dining with timber flooring, flowing seamlessly to the outdoors
- \* Private courtyard with side gate and a northerly aspect
- \* Bright, updated kitchen with dishwasher, internal laundry + storage
- \* Undercover car space with additional storage
- \* Conveniently located near Epping Rd buses and Metro
- \* In the catchment for Chelt Girls, Epping Boys, and Carlingford High Schools

Approx. Sizes - Total: 163sqm, Internal (incl. courtyard): 145sqm, Car space: 16sqm, Storage: 2sqm

Approx. Outgoings - Strata: 1,228.11pq, Water: \$172.79pq, Council: \$362.10pq