

84A Mount View Parade, Croydon, VIC, 3136



Townhouse For Sale

Monday, 18 November 2024

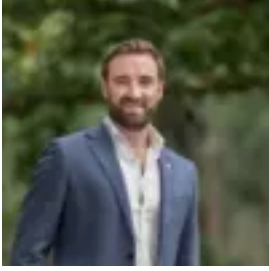
84A Mount View Parade, Croydon, VIC, 3136

Bedrooms: 3

Bathrooms: 2

Parkings: 2

Type: Townhouse



Daniel Broadbent

0398706211

Gorgeous single level style, north-facing entertaining

Epitomising the true meaning of home, this stunning weatherboard residence enjoys a tranquil position tucked at the bottom of a private driveway. Grey and white hues wrapped in leafy garden allure add charm to the beautiful fully fenced and gated property. Centrally located and within a short walk of local Lincoln Road shops, the home is ideal for a young family, professionals, or a downsizing couple. Boasting a great investment in single level low maintenance living.

Large enough to entertain but ideally sized for those who don't desire the upkeep, polished hardwood timber floors engage the two entertaining domains. A living room at the front is spaciouly presented with a delicate pressed metal, drop pendant light creating a warm tone for the room.

Family/dining is brightened by the desirable north rear-facing light with a showpiece concrete island benchtop drawing your interest to a fantastic kitchen with DeLonghi electric oven, gas cooktop, dishwasher, soft-close drawers and a crisp subway tile splashback. Interacting with a generous, freshly oiled merbau deck with timber and stainless steel balustrades, primed for parties, drinks with friends and simple everyday relaxation. A separate paved pocket appreciates the shade from the mature Tulip tree and a sizeable vegetable garden has you covered for all your home cooking needs. Flowing around to a second entrance to a brightly renovated laundry with built-in storage including a powered cupboard for charging the vacuum, elegantly finished with subway tiles.

Three smartly appointed bedrooms are located in a separate quiet wing of the home. A master is fitted with a walk-in robe and ensuite, and the central bathroom provides a bright space with bath, shower and separate toilet. The home is on its own title with no owner's corporate and further provides: high ceilings throughout, gas ducted heating, evaporative cooling, ceiling fans, double linen storage, a dual remote garage with internal/rear garden entry plus the bonus of oversized roof height ideal for larger vehicles, and a generous extra car space or optional relaxation space.

Apart from the aesthetic appeal, this secure home relishes its position in walking proximity to a street park and Spriggs Drive Playground/BBQ area. Close distance to Silcock Reserve, Brentwood Park, Chase Allen Reserve, and fabulous bike/foot trails connecting Esther and Barneong Reserves. Minutes to Croydon Main Street shops, cafes and a micro-brewery. Very close to Mooroolbark Plaza, Chirnside Park Shops, Reading Cinemas and the Homemaker Centre. Retirees are going to love the access to golf courses and the idyllic Yarra Valley wineries. Families will appreciate proximity to Ruskin Park and Manchester Primary Schools, Oxley and Luther Colleges and Yarra Valley Grammar. Handy to Croydon and Mooroolbark Stations, the Eastern Freeway and Eastlink. Don't miss out on this gem – inspect now!

Disclaimer: The information contained herein has been supplied to us and is to be used as a guide only. No information in this report is to be relied on for financial or legal purposes. Although every care has been taken in the preparation of the above information, we stress that particulars herein are for information only and do not constitute representation by the Owners or Agent.