

# Address available on request, Highett, Vic 3190

## Townhouse For Sale

Tuesday, 7 January 2025



Address available on request, Highett, Vic 3190

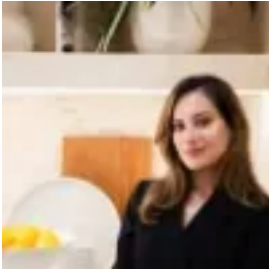
**Bedrooms: 3**

**Bathrooms: 2**

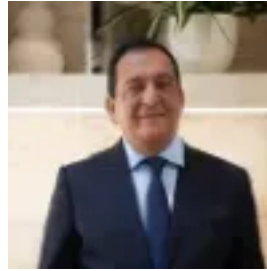
**Parkings: 3**

**Area: 144 m2**

**Type: Townhouse**



Simran Sablok  
0386455561



Raj Sablok

**\$1,056,800**

3 Car Parks Included. Neue Townhouses redefine contemporary living in Highett with 3 bedrooms, 2 bathrooms, and 3 car parks. Architecturally curated by ClarkeHopkinsClarke, these homes seamlessly blend sophistication and practicality. Interiors boast Bosch appliances, open living spaces, and modern design elements, creating an ambiance of luxury and versatility. The external area of 19 square meters provides a charming retreat. Situated in the vibrant Highett neighborhood, residents enjoy a mere ten-minute drive to Melbourne's pristine beaches, embracing bayside living. Surrounding green spaces and parks offer opportunities for outdoor activities, while seamless access to major roads and public transport connects residents to the city's bustling offerings. Neue Townhouses epitomize a sought-after lifestyle, where elegance meets convenience. Secure your place today and embrace the Neue way of living. Please contact Simran on 0474778400 or Raj on 0434477122 to book an inspection or for more information. \*It is to be noted that all images are artistic Impressions. Please refer to the floorplan for the actual apartment. \*