

# Address available on request, Highett, Vic 3190

## Townhouse For Sale

Tuesday, 7 January 2025



Address available on request, Highett, Vic 3190

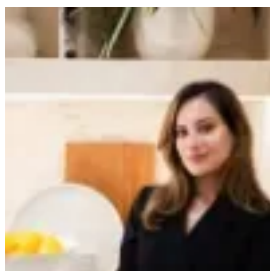
**Bedrooms: 3**

**Bathrooms: 2**

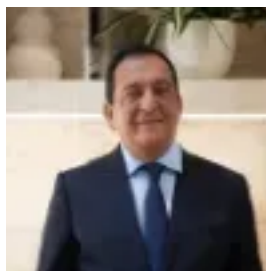
**Parkings: 3**

**Area: 142 m2**

**Type: Townhouse**



Simran Sablok  
0386455561



Raj Sablok

**\$1,015,800**

Welcome to Neue Townhouses, where modern elegance and convenience converge in the heart of Highett. This exceptional residential development boasts 3-bedroom townhouses, each thoughtfully designed with a focus on contemporary aesthetics and functionality. With an internal area of 124 square meters and an additional 19 square meters of external space, these homes offer a perfect blend of spacious interiors and outdoor charm. Step inside this townhouse, and you'll find a symphony of sophistication. The interiors, spanning an expansive 124 square meters, radiate a sense of opulence that is both inviting and comfortable. The living spaces are meticulously designed to maximize natural light, creating an airy and welcoming ambiance. The open-plan layout seamlessly connects the living, dining, and kitchen areas, fostering a sense of togetherness for families and providing an ideal space for entertaining guests. With 2 bathrooms, 3 dedicated parking spaces, and a storage unit, Neue Townhouses anticipate the practical needs of modern living. Whether you're a family seeking a comfortable abode or an individual desiring a stylish haven, Neue Townhouses beckon with a promise of a refined and fulfilling lifestyle in one of Melbourne's most sought-after locales. Please contact Simran on 0474778400 or Raj on 0434477122 to book an inspection or for more information. \*It is to be noted that all images are artistic Impressions. Please refer to the floorplan for the actual apartment. \*