

Address available on request, Highett, Vic 3190

Townhouse For Sale

Tuesday, 7 January 2025



Address available on request, Highett, Vic 3190

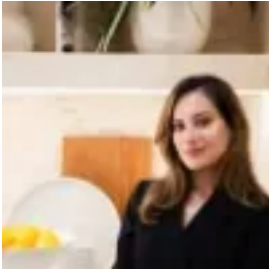
Bedrooms: 3

Bathrooms: 2

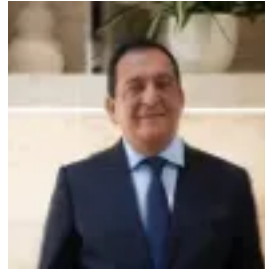
Parkings: 3

Area: 166 m2

Type: Townhouse



Simran Sablok
0386455561



Raj Sablok

\$1,208,800

Welcome to Neue Townhouses, where modern elegance and convenience converge in the heart of Highett. This exceptional residential development boasts 3-bedroom townhouses, each thoughtfully designed with a focus on contemporary aesthetics and functionality. With an internal area of 148 square meters and an additional 19 square meters of external space, these homes offer a perfect blend of spacious interiors and outdoor charm. Beyond the confines of Neue, residents are treated to the proximity of Melbourne's pristine beaches, just a short ten-minute drive away. The allure of bayside living becomes a daily reality, complemented by nearby parks and green spaces that invite outdoor activities and leisurely strolls. The convenience of seamless access to major roads and public transport, including the train station, opens up the entire city, allowing residents to explore the rich tapestry of opportunities for work, study, shopping, and entertainment. Secure your place in this sought-after community by reaching out to our sales agent today. The Neue lifestyle is an invitation to a new beginning—act now and embark on your journey in this captivating residential haven. Please contact Simran on 0474778400 or Raj on 0434477122 to book an inspection or for more information. *It is to be noted that all images are artistic Impressions. Please refer to the floorplan for the actual apartment. *