

1/8a Kermode Street, Port Sorell, Tas 7307



Sold Unit

Monday, 14 August 2023

1/8a Kermode Street, Port Sorell, Tas 7307

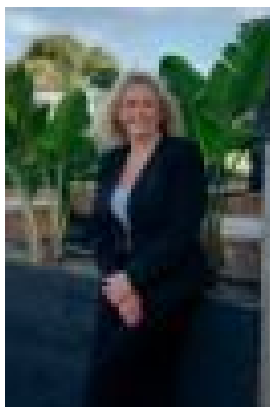
Bedrooms: 2

Bathrooms: 1

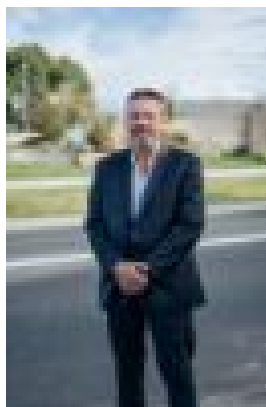
Parkings: 1

Area: 112 m2

Type: Unit



Corinne Price



John Price
0439340280

\$325,000

Quietly situated in Port Sorell, within walking distance to Panatana Creek, Port Sorell Primary School, pretty beaches and Shearwater Village, this light filled unit is a great investment option or starter property. A generous open plan design, with 2 double bedrooms, bathroom and separate laundry. Good storage and a lock up garage. Sunny front yard and neat courtyard rear garden capturing all the afternoon sun. Currently returning \$16,640 gross per annum, the unit is one of 2 on the block. Tenant is in place till 7th September 2023. Advanced notice for viewings is required.