

11/65 Railway Parade, Lakemba, NSW, 2195



Unit For Sale

Wednesday, 15 January 2025

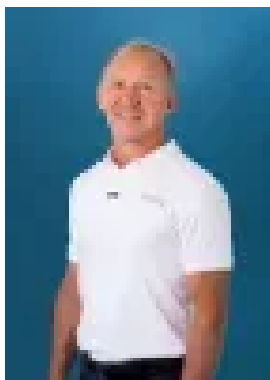
11/65 Railway Parade, Lakemba, NSW, 2195

Bedrooms: 2

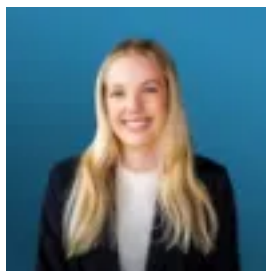
Bathrooms: 1

Parkings: 1

Type: Unit



Luke Knapton
0297503999



Grace Thomson
0297503999

XXX LARGE / CITY VIEWS

Perched on the top floor of this highly sought after SECURITY COMPLEX is a spacious 2 bedroom home unit. There is a massive eat-in-kitchen with ample cupboard space and an internal laundry room. The spacious lounge room has an attached North facing balcony with distant and city views. Both bedrooms are double size with the main hosting a built-in-robe sharing the same fantastic outlook. The complex is immaculate throughout with security intercom and there is a large 25sqm LOCK UP GARAGE. The complex is conveniently located between Lakemba and Wiley Park stations. Total area: 109 sqm, Strata Levies: approx. \$890 ¼, Rented at \$470 pw with room to increase.

Download a Strata Report here:

<https://beforeyoubuy.com.au/reports/unit-11-65-railway-parade-lakemba-nsw-2195/strata>

All precaution has been taken to determine the accuracy of the above information however, all interested parties are to rely on their own inquiries and professional advice.