

1602/21 Dunkerley Place, Waterloo, NSW, 2017

MGM MARTIN

Unit For Sale

Friday, 13 December 2024

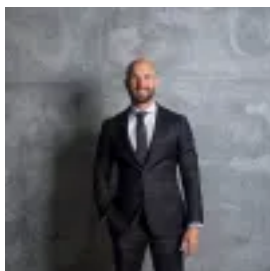
1602/21 Dunkerley Place, Waterloo, NSW, 2017

Bedrooms: 2

Bathrooms: 2

Parkings: 1

Type: Unit



David Bettini
0296623954

MGM MARTIN - TWO BEDROOM APARTMENT

A dazzling display of the iconic Sydney city skyline is the perfect backdrop for this architecturally designed two bedroom apartment in the luxe 'Waterfall by Crown' complex. Setting the scene for upscale inner-city living, it's a premium lifestyle waiting to be uncovered.

What's important to you

- Architectural interiors showcase an earthy feel with timber and gloss white
- Panoramic views from its 16th floor position with iconic Sydney city skyline
- Rooftop infinity pool, spa and outdoor cinema, city views, on-site concierge
- Open living with tiled floors flows to the NW facing terrace, internal laundry
- Premium gas kitchen, integrated dishwasher and fridge space, microwave
- Beds with robes, main with ensuite, one secure car space, sleek bathroom

The local's point of view

- Easy transport options with the bus stop just a 3 min walk away on Bourke St
- Surrounded by a selection of eateries, 4 minute walk to Plus Fitness Waterloo
- Within a 5 min walk to the green Joynton Park with picnic areas or Tote Park
- Walk 7 minutes to East Village for supermarkets, restaurants and liquor store
- 900m to Green Square precinct with train station, Woolworths and restaurants
- 10 minute walk to picturesque Moore Park with the golf course and light rail