

2/25 Weiley Avenue, Grafton, NSW 2460

Unit For Rent

Thursday, 9 January 2025



2/25 Weiley Avenue, Grafton, NSW 2460

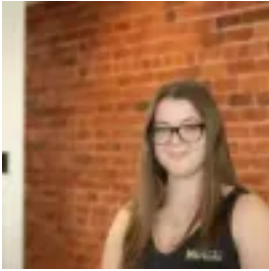
Bedrooms: 2

Bathrooms: 2

Parkings: 1

Area: 138 m2

Type: Unit



Sophie McIntyre

0431276088

\$470 per week

*****HOW TO APPLY – PLEASE READ *****Our office accepts applications before inspections. Private inspections will be arranged with select tenants. To be eligible you must apply. We accept applications via Ignite.*IGNITE – on realestate.com select APPLY. Discover the perfect blend of comfort and convenience with this ultra-affordable rental on Weiley Avenue. Nestled in the heart of Grafton, this property offers two bedrooms and two bathrooms, providing ample space for a small family or a couple. The home exudes a warm and welcoming atmosphere, making it easy to settle in and make it your own. With a garage included, you'll have the added benefit of secure parking or extra storage space. Grafton is renowned for its vibrant community spirit and picturesque surroundings. Enjoy leisurely strolls along the tree-lined streets or take advantage of the nearby parks for a breath of fresh air. The suburb boasts excellent amenities, including local shops, cafes, and recreational facilities, all within easy reach. For families, Grafton Public School offers quality education just a short drive away. Don't miss this rare opportunity to secure an affordable rental in such a desirable location. With the combination of charming features and practical living spaces, this property won't stay on the market for long. Contact us today to make this your new home!