

**23103/2B Figtree Drive, Sydney Olympic Park, NSW, Horwood Nolan.  
2127**

## **Unit For Sale**

Saturday, 18 January 2025

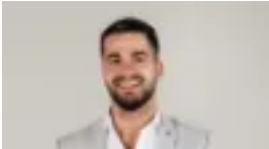
23103/2B Figtree Drive, Sydney Olympic Park, NSW, 2127

**Bedrooms: 3**

**Bathrooms: 2**

**Parkings: 2**

**Type: Unit**



Jacob Saleh  
0297436656

## NW facing light-soaked apartment with sublime views

NW facing light-soaked apartment with sublime views  
Strata per quarter: \$1870  
Commanding spectacular elevated views over the stadium to Homebush Bay and beyond from its prized 31st floor setting, this striking contemporary apartment delivers an exceptional lifestyle sanctuary in a premium Mirvac built development. Boasting a north-west aspect and flooded with natural light, it reveals beautifully appointed interiors flowing to a sun-soaked entertainment balcony. Its unbeatable location is 500 metres to cosmopolitan dining, entertainment and Olympic Park Station. Open to the north and bathed in natural light  
Spectacular elevated views to Blue Mountains  
A full-width sun-soaked entertainers' balcony  
Gourmet stone kitchen with Miele gas appliances  
Well-sized bedrooms appointed with built-in robes  
Master with new BIR's, deluxe full-sized ensuite  
New hardwood timber floorboards, ducted air  
Newly configured internal laundry, vast storage  
On-site building manager, video security intercom  
Lift access, double car space, two storage cages.