

49/5-17 Pacific Highway, Roseville, NSW 2069



Unit For Rent

Tuesday, 7 January 2025

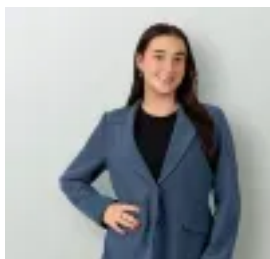
49/5-17 Pacific Highway, Roseville, NSW 2069

Bedrooms: 1

Bathrooms: 1

Parkings: 1

Type: Unit



Holly Kerr

\$650 per week

Discover this fabulous 1-bedroom unit with a large, sunny courtyard, nestled in a highly sought-after modern block well away from the highway for peace and privacy.

- **Spacious Bedroom:** Includes wall to ceiling wardrobe for ample storage.
- **Modern Kitchen:** Features granite benchtops, a dishwasher, and electric stove/oven
- **An internal laundry** with a clothes dryer
- **Large Courtyard:** Perfect for outdoor entertaining or relaxing in the sun.
- **Prime Location:** Easy access to local amenities, train station, cafes, and cinemas.
- **Secure Parking:** Includes security under-building car space.

Enjoy a contemporary lifestyle in a vibrant neighbourhood with everything you need at your doorstep.