

9/30 Polglase Circuit, Johnston, NT 0832



Unit For Sale

Tuesday, 7 January 2025

9/30 Polglase Circuit, Johnston, NT 0832

Bedrooms: 3

Bathrooms: 2

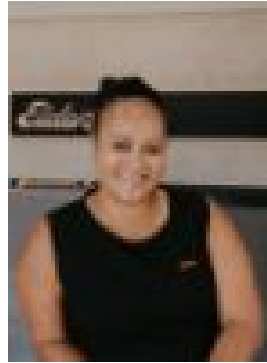
Parkings: 2

Area: 239 m2

Type: Unit



Rayna Kirikino



Macca Houkamau

OFFERS OVER \$450,0000

This stunning 3-bedroom, 2-bathroom unit has quality finishes and plenty of yard space with colourbond fencing for privacy and a double carport - perfectly located in the well sought after suburb of Johnston. Internally offers a good-sized open plan living, dining and a kitchen area. The kitchen includes a fridge alcove that is plumbed, overhead cabinets for extra storage, electric cook top, wall oven and a range hood. Stone bench tops with a waterfall edge and breakfast bar. Throughout the home are large, polished porcelain tiles and split system air conditioners which keep the property cool and easy to clean. The main bedroom is generously sized and includes a walk-in robe and its own ensuite, bedrooms 2 and 3 are also a good size and include built in robes. Within close proximity to parks, schools, the Zuccoli IGA, Gateway shopping centre and so much more. This has always been a popular complex and with low body corporate fees. The complex allows pets on application. Currently rented for \$580 per week until 20th February 2025. Body Corporate Manager: Altitude Management. Body Corporate Fees: \$872.38 per quarter (approx.). Council Rates: \$1,948 per year (approx.). PV solar panels - 25/08/2017. Year Built: 2016. Area under title: 239m² (approx.). Town Planning Zone: LMR - Low-Medium Density Residential.